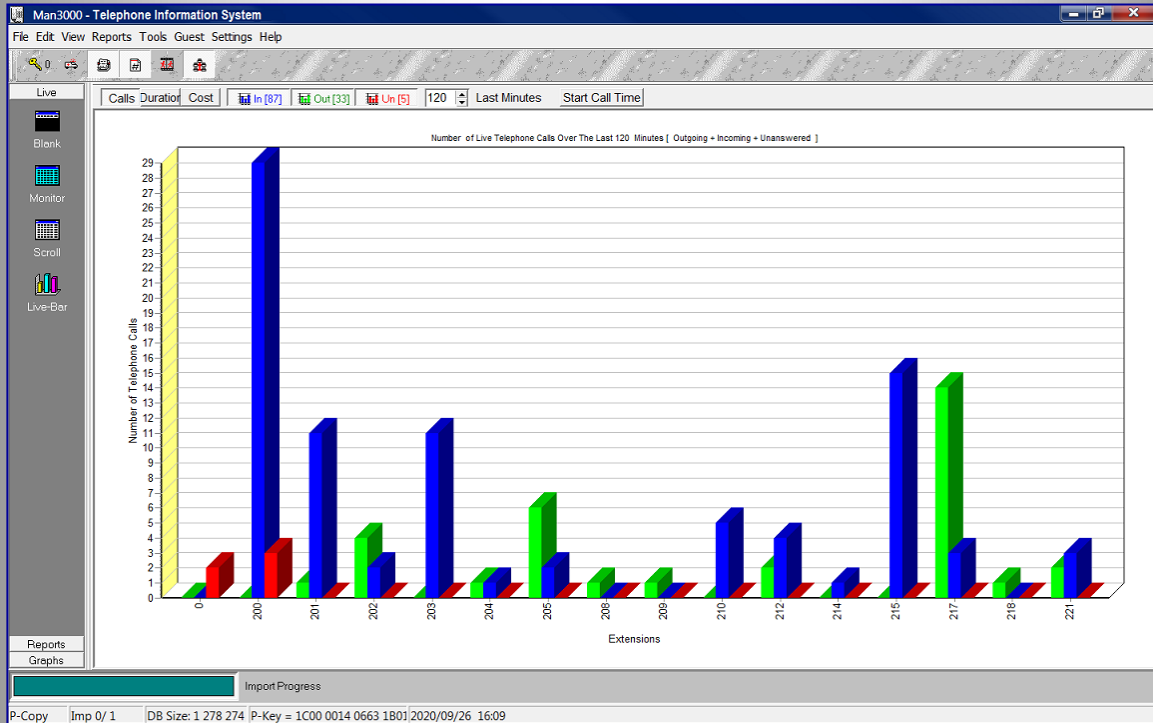


# Man3000

## Telephone Information Systems

### Multi User






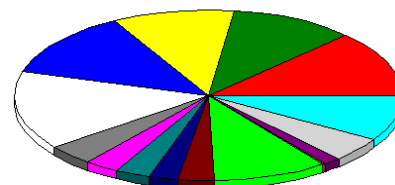
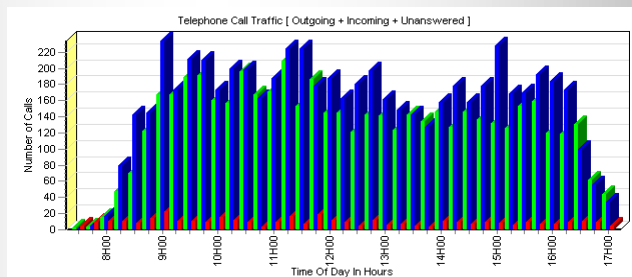
## Man3000

### Telephone Information Systems

Man3000 is a Powerful,  
Easy to use  
Telephone Information  
System

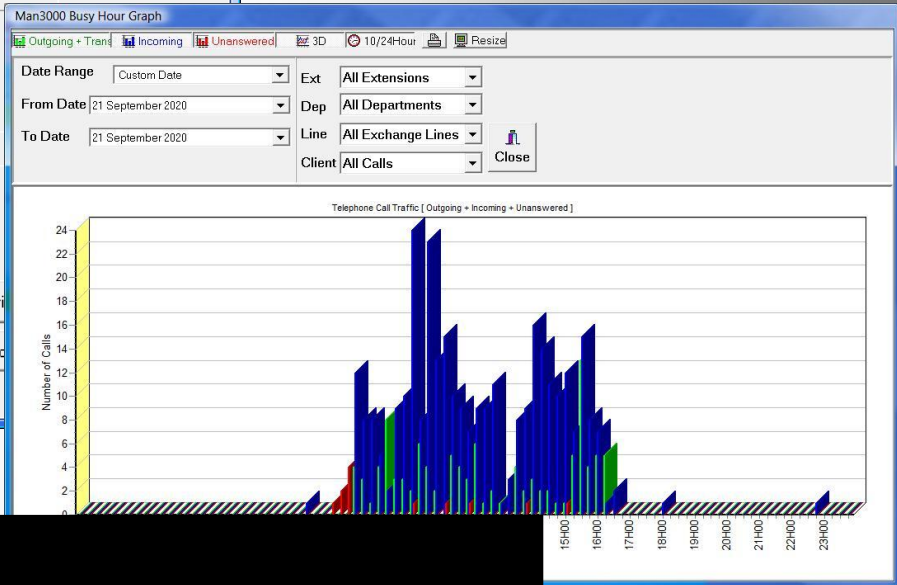
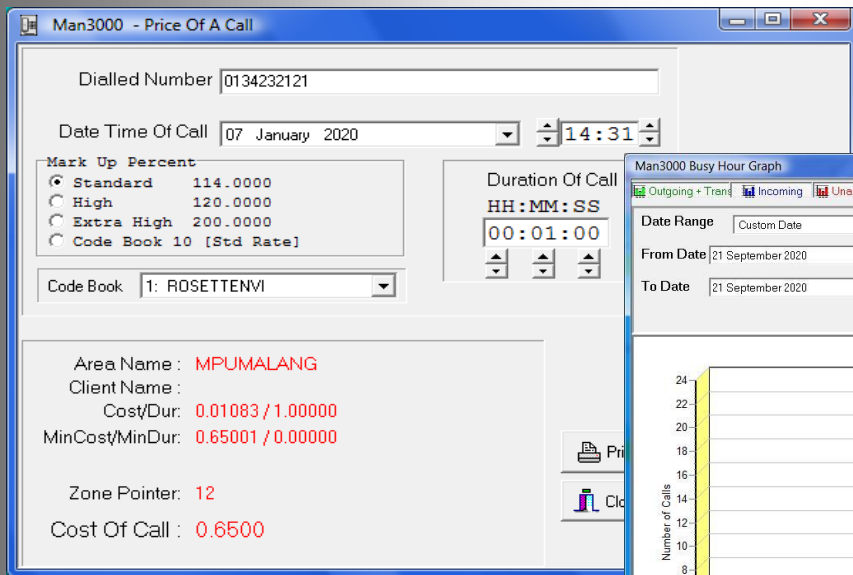
## Main Features

- Live download screen.
- Multi user Networking (Personal copies).
  - Company Network Copy (Dependant on company network).
  - Cloud Copy (Independent of company network).
- Reliable flexible and instant reports.
- Exporting & Emailing of reports to: Acrobat , Excel/CSV , Word 
- Automatic scheduling of reports via Email, Print or Save to File.
- Multiple carries (i.e. Telkom, Neotel, MTN, Vodacom, Cell C, VOIP etc)
- Budget for extensions & account codes with notifications.
- Automatic barring on extensions or account codes (PABX dependant).
- Inactivity alerts via Outlook or POP3 mail.



|     |           |     |
|-----|-----------|-----|
| 200 | Peter     | 414 |
| 201 | Mark      | 342 |
| 202 | Candice   | 333 |
| 203 | Charles   | 411 |
| 204 | Rene      | 492 |
| 205 | Office 1  | 129 |
| 206 | Office 2  | 94  |
| 207 | Sean      | 97  |
| 208 | Kimberley | 78  |
| 209 | Terry     | 101 |
| 217 | Leon      | 314 |
| 219 | Eric      | 10  |
| 224 | Cynthia   | 48  |
| 228 | Richard   | 149 |
| 230 | Annalise  | 287 |

' It Works '



# Man3000

## Additional Features:

- Fully networkable via LAN, WAN, Wi-Fi and the Cloud.
- Built in Guest Package.
- Live exports to hotel and attorney packages.
- Compatible with ALL PABX's with RS232 or Ethernet [TCP/IP] Outputs and Soft PBX's.
- Multiple level mark-up facilities for call charges.
- Phantom extensions.
- Phantom exchange lines.
- Advice of charge compatibility.
- Additional Exports to HTML, JPG, TIF, BMP and GIF.
- Automatic emailing of unauthorized calls.
- Multiple level password protection.
- Unlimited database size.

## Reports:

- Extension summary reports.
- Extension outgoing cost reports.
- Extension detail reports with budget usage.
- Department summary reports.
- Department detail reports.
- Top 40/120/300 reports by
  - Cost.
  - Duration.
  - Number dialled.
- Exchange summary reports.
- Exchange detail reports.
- Account code reports.
- Client list reports.
- Memorised reports.
- Graphs
  - Busy hour graph.
  - History graph.
  - Extension bar graph.
  - Extension pie chart.
  - Exchange line bar graph.

## PC Requirements

- Windows XP, Vista, Windows7 & Windows Server family.
- 256 MB Ram
- 100 Meg Hard Disk Space
- CD Rom Drive
- Serial, USB or TCP/IP Port
- NO DEDICATED PC REQUIRED
- INTERNET OR PRINTER CABABILITIES REQUIRED

